



Dear Parents and Carers

Today I am writing the newsletter sat on the train, as Mr Warner and I are heading to London to visit the BETT exhibition.

The BETT exhibition is a show for educational technology. We are hoping to be inspired by the possibilities for the future and see how we can improve how we use technology so that we can prepare your children for the future.

## **SCHOOL IMPROVEMENT PLAN**

We have just updated our School Improvement Plan for 2019. We are always evaluating our priorities and adapting what we do to make sure we are focussing on where we can make the most difference for our children.

For this improvement cycle we will be focussing on the following key priorities:

### Assessment

We will be developing how we assess pupils to identify their needs more accurately, so that we can address any gaps in learning swiftly. This includes our summative assessment (how we assess on a termly basis) and our formative assessment (how we assess lesson-by-lesson, moment-by-moment). The main intention of this priority is that your child will receive work that is specific to their needs and are appropriately challenging

### Mathematics

We have identified that we need to develop how we sequence our lessons in mathematics. That means developing our mathematics planning and includes developing how we use concrete, pictorial and abstract (CPA) ideas to help children understand mathematical concepts. Using concrete and pictorial resources helps children to visualise and build up images in their mind so that they can draw on these when solving abstract problems.

### Curriculum

You may have heard in the news that Ofsted are moving their focus towards a rounded education for children. This is a really positive change but something we have always been aiming to deliver. We will continue to design an integrated curriculum that focuses on fewer things in greater depth and also raises the standards in our foundation subjects, such as, history, geography, design technology and art. We will be improving how we teach the specific skills in these subjects. As part of this priority we will also seeking to provide a minimum curriculum entitlement for your children. This will all be driven from our Core Beliefs which I will share with you very soon.

## **PARENTS AND CARERS GROUP**

Thank you for all the parents that have expressed an interest in joining our Parent and Carers Group. I am thrilled that so many of you are interested in taking part. I will write to you next week with a proposed date for our first meeting, which will be early into the next half term.

Best wishes from a train somewhere near Basingstoke!

**Tim Woodford, Headteacher**

---

## **Compassion**

1 John 3:18 (NEW TESTAMENT: LETTERS)

*Our love should not be just words and talk: it must be true love, which shows itself in action.*



## Year 5/6 Football League

Well done to our football teams on another good performance on Monday evening. Our overall result will be determined after week 4.



### Head Lice are about!

May we please remind parent/carer's to ensure that children with long hair wear it tied up for school, in order to help eliminate head lice from spreading.



If you spot any signs of head lice on your child, please treat immediately with the appropriate shampoo and ensure that bedding and pillows are also put on a hot wash!

Thank you

Rownhams St John's School Association - Registered Charity No: 1071964



£3.00  
each

KS1: 5.00 pm - 6.00 pm  
KS2: 6.15 pm - 7.30 pm

BUY TICKETS  
IN ADVANCE!!

Drinks and treats available from 10p

Ice cream 50p    Homemade cakes 20p    Finger Torch 50p

*Homemade cakes will be available for the children to buy. We are unable to guarantee that they do not contain traces of nuts or other allergy sensitive ingredients, but we can guarantee they'll be delicious!*

*Please can we ask that children do not bring too much money, a sensible amount would be a maximum £2 each, thank you.*

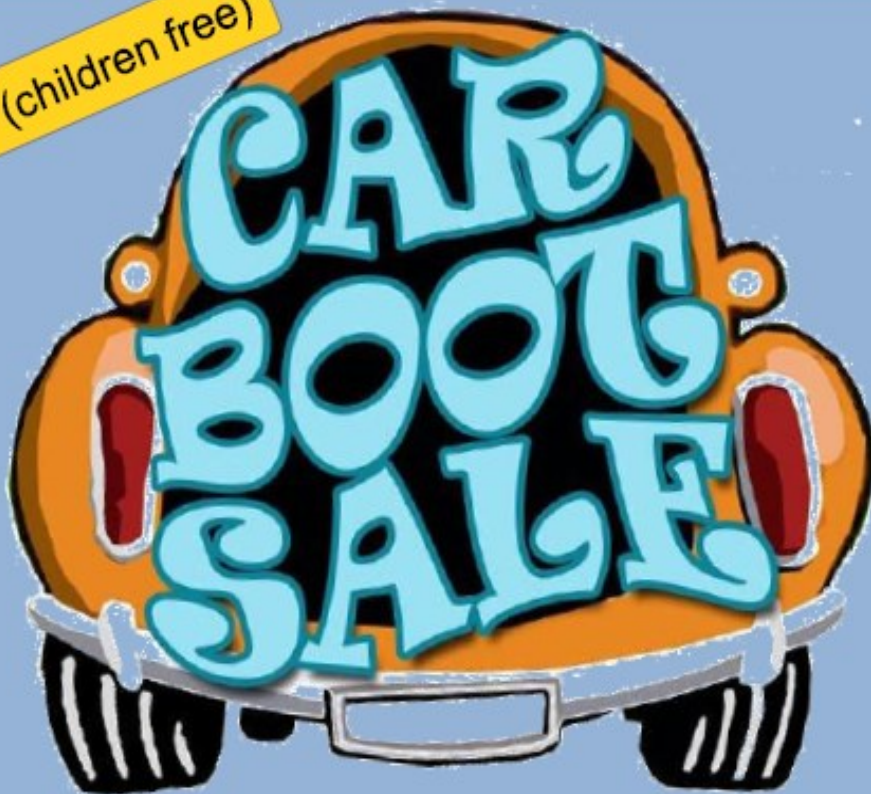
#### PARENTS!!

We need help on the night! Either setting up, or during either (or both) key stages, or help pack up/clear up afterwards then please fill out the form provided or let a FORCE member know, many thanks.

*With your help, it helps to make it happen!*

**NO mobile phones at the disco please!**

50p entry (children free)



**9-11AM Saturday**

**30th March**

Preloved school  
uniform stall

**£5 per car**

Tea, coffee, cake  
and bacon rolls  
available

Secondhand goods or  
homemade craft  
welcome

**Rownhams**

**St John's Primary**

**Book your spot early to avoid disappointment!**

Pop into the school office or phone 023 8073 6417

**ATTENDANCE MATTERS**



Showing your child the importance of attending school every day not only helps your child to settle quickly when starting school but helps them to keep and sustain friendships and enjoy the school environment



<b>Registration Group</b>	<b>Class % Attendance</b>
Little Nemo's (Mrs Baxter/Mrs Shiers)	99.2%
Elvis (Mrs Phelps/Miss Hogbin)	97.7%
Monet's (Mrs Johnson)	97.2%
Disney (Mrs Hannam)	96.7%
Jordan (Mr Warner)	96%
Van Gogh's (Miss Knight)	95.7%
Edison's (Mrs Phillips/Mr Brown)	95.2%
Einstein (Mrs Garrod/Mrs Brown)	95%
Little Dory's (Miss Ramsdale)	94.8%
Ford (Miss Hill)	93.9%
J K Rowling (Miss Hamilton)	91.3%

**INSET DAYS**

**Monday 25th February 2019**

**Friday 24th May 2019**

**[CLICK HERE](#)** for Hampshire School Dates  
2018/2019

## Love, Joy & Responsibility

### Emails/Texts/Letters Home

Copies are available in the office

<http://www.rownhams.hants.sch.uk/adults/letters/>

Day	Letter Type	Year Group	Description
21 Jan 19	Email	Specific pupils Year 1/2	Multi Skills Festival
23 Jan 19	Letter/Slip	Whole School	PTA Disco
23 Jan 19	Letter	Year 3/4	Home Learning

### Calendar -

May we politely remind parents that amendments and new dates are added to the calendar throughout the term so please always check the calendar regularly and ensure your home diary is correct. Thank you.

Date	Time	Year Group	Description
25 Jan 19	1.30-4.00pm	Year 1/2	Multi Skills Festival - Mountbatten
28 Jan 19	4.00-5.00pm	Year 5/6	Football League 3 - Mountbatten
4 Feb 19	4.00-5.00pm	Year 5/6	Football League 4 - Mountbatten
11 Feb 19	4.00-5.00pm	Years (1-6)	Cross Country Race 3 - Mountbatten
<b>14 Feb 19</b>		<b>Whole School</b>	<b>PTA Disco</b>
15 Feb 19		Whole School	Last day of school - Half Term
15 Feb 19	1.00-4.00pm	Year 5/6	Football Festival - Mountbatten
18 Feb 19 - 22 Feb 19		Whole School	HALF TERM HOLIDAY
22 Feb 19	10.00-4.00pm	Musical Theatre	Extra Session - HALF TERM
<b>25 Feb 19</b>	<b>All day</b>	<b>Whole School</b>	<b>INSET DAY</b>
<b>30 May 19</b>	<b>9-11am</b>	<b>Community</b>	<b>Car Boot Sale</b>
<b>24 May 19</b>	<b>All day</b>	<b>Whole School</b>	<b>INSET DAY</b>
12 - 14 Jun 19	3 days	Year 3/4 KH Class	Minstead
17 - 19 Jun 19	3 days	Year 3/4 MG Class	Minstead
19 - 21 Jun 19	3 days	Year 3/4 SW Class	Minstead