

Rownhams Return Plan 2021

8th March 2021



Written by the Rownhams' Staff Team

Contents:

Contents:	2
Our Plan: Information for Staff and Families	3
What measures will we have in place to reduce the risk of transmission?	5
<i>What if a child or member of your household shows symptoms of Covid-19?</i>	5
<i>Is it compulsory for my child to attend school?</i>	5
<i>How will the school ensure social distancing is maintained?</i>	6
<i>How will the children and the school day be organised?</i>	6
<i>Will there be any clubs for my child to attend, including Breakfast Club?</i>	6
<i>What will the start and end of the day look like for drop-off and collection times?</i>	7
<i>How will we control the spread of the virus within the school day?</i>	7
<i>I have heard there may be testing available for my family, how do I start this?</i>	8
<i>How do I collect my testing kit?</i>	9
<i>How do I order home test kits online?</i>	9
<i>What if my child is shielded or clinically vulnerable?</i>	9
<i>What if someone in my house is in the 'critically extremely vulnerable' having had a letter about this?</i>	10
APPENDIX A: Drop-off & Collection times	10
APPENDIX B: Internal School Plan and Class Placement	11
APPENDIX C: Parent and Carers one-way system for moving on and off site at drop-off and Collection	12
APPENDIX D: Drop-off and Collection times Zone	14
APPENDIX E: Checklist for Parents & Carers	15

Our Plan: Information for Staff and Families

It really does feel like there is light at the end of the tunnel now, especially with the arrival of Spring! We are all super excited to be welcoming all of our children back into school on Monday.

Once again, this will be an anxious time. We are all too aware that this lockdown has been particularly difficult for children and their families, compounding the challenges from previous lockdowns, plus the cold, wet weather of January meant we couldn't get outside into the gardens and local parks so often.



Contrary to this, it is, however, my hope that with more time engaged with their teachers and support staff online, the children will feel less like they have been away and be more able to re-engage with our adults, their peers and the classroom environment. Nevertheless, we will have the right support and approach to welcome back children with safety and emotional wellness being priority number one.

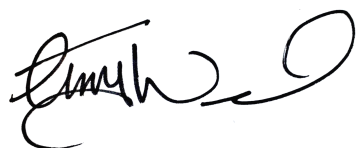
When we started remote teaching, our team found themselves on a very steep learning curve as we ventured into uncharted territory and had to find completely new ways to teach, with new technologies, whilst also trying to find a balance that supported busy families. The support from home has been truly awesome and it is thanks to this that the children have been able to keep up with their learning as much as possible. We also appreciate the kind messages and words of thanks and support as these kept us going during these challenging times.

We must also remember that the school has remained open during the lockdown to support our key workers so that they have been able to continue their essential work - only this time we have had a much larger group of children. Teachers and support staff have continued to deliver in school teaching and learning, whilst also balancing remote learning responsibilities with very positive outcomes.

So, with all this in mind, I would like to end with a big thank you to everyone, from our parents and carers supporting at home, to our key workers protecting the community, the strong support from our governing body and finally a big, and very personal, thank you to my awesome team of teachers, learning support assistants, finance and admin team, pastoral support, our middays, our site team, including our site manager and our team of cleaners. Each member of our team has been an integral piece of the puzzle - thank you and well done.

We have made some minor changes since the last return to school plan was sent out so please read the following document, paying close to attention to slight changes to our staggered drop-off and collection times and to the adjusted one-way system. We hope that the changes will go a small way to help parents and carers and make life a little easier before and after school, whilst also maintaining the same high level of safety. Please also note the section on getting hold of your own COVID-19 testing kits in the frequently asked questions below, on p8.

All of the staff at Rownhams have missed the children very much and we look forward to being back together as one whole again.

A handwritten signature in black ink, appearing to read 'Tim Woodford', with a stylized, flowing script.

Tim Woodford

Headteacher

What measures will we have in place to reduce the risk of transmission?

Listed below are some of the key measures that we have planned to have in place. This is not an exhaustive or conclusive list. Further information has been detailed in our risk assessment.

What if a child or member of your household shows symptoms of Covid-19?

- If your child is ill they **must** stay at home.
- Report your child's absence in the usual way by calling the school office number: 02380 736417.
- If a member of your household presents with symptoms, then follow government guidance and stay at home and arrange for a test at the very first opportunity [here](#).
- If a child does present with symptoms during the school day he or she will be moved to a room away from others and await pick-up from a parent or carer. In this instance, staff will be required to wear PPE.

Is it compulsory for my child to attend school?

- Yes, missing out on more time in the classroom risks pupils falling further behind. Those with higher overall absence tend to achieve less well in both primary and secondary school. School attendance will therefore be mandatory again from the 8th March.

How will the school ensure social distancing is maintained?

- The government accepts that early years and primary age children cannot be expected to remain 2 meters apart from each other and staff. However, it is still important to minimise contact between people as much as possible, and we can achieve that and reduce transmission risk by ensuring children, young people and staff where possible, only mix in a consistent group and that group stays away from other people and groups.

How will the children and the school day be organised?

- Each class will create its own 'bubble' and contact with other classes will be reduced as much as possible through staggering of the school day, including start and finish times and lunch and break times. **(See Appendix A)**
- Each group will have little or no contact with other class groups (although, for example, passing in corridors is considered 'low-risk'). Adults can work across groups where this is needed to support our educational provision.
- Break and lunchtimes will be staggered to minimise the possibility of groups mixing. Lunch will take place in their designated classroom, with the exception of Year R who will have lunch in the hall.

Will there be any clubs for my child to attend, including Breakfast Club?

- There will be no clubs, for at least the first 4 weeks of school, and this will be reviewed at the start of the Summer term, when we will hopefully resume some of our provision.
- Breakfast Club will run as normal, and will be available to all children and families.
- Peripatetic music lessons will continue under strict guidance in small, socially distanced groups.

What will the start and end of the day look like for drop-off and collection times?

- There will be staggered drop-off and collection times (by 10 minutes). **(See Appendix A)**
- There will be controlled school entrance and exit routes, including a one-way system, for you to enter and leave by when dropping and collecting children. This might mean you will have to walk a little further. **(See Appendix B)**
- We have arranged for specific drop-off and collection zones for each year group. These are clearly marked on this plan **(See Appendix C)**
- Parents and carers must wear face masks on pavements outside of the school and when on the school grounds to protect themselves **and those around them.**
- Families must not arrive on site more than 5 minutes before start-time so that we can maintain social distancing on site.

How will we control the spread of the virus within the school day?

- We will be implementing rigorous health and hygiene routines, for example, ensuring regular hand-washing at key points during the day, including, on arrival or after a sneeze or cough, before eating etc. Staff will have ready access to the hygiene and cleaning materials they need, including hand sanitizers and access to sinks to wash hands. Use of toilets will be managed to avoid too many children at any one time.
- We will be cleaning all toys and equipment after every use with appropriate cleaning materials. All soft furnishings and toys that are difficult to clean will be removed from the classrooms.
- As much as possible, children will have access to their own resources to reduce sharing. Children will have their own stationery and where equipment is shared it will be kept within their group and cleaned between uses.
- The staff will be wearing face masks in all communal areas, and in some situations, in the classroom.

- Children will be required to wear school uniform **(See Appendix E)**
 - Clothes washing can be treated as normal but you may choose to wash more regularly to err on the side of caution.
 - Children should wear their PE kit to school on PE days. Your child's teacher will let you know when this is.
- Children should bring in their own water bottle and use plastic lunch boxes (where possible) rather than fabric ones as they are easier to clean and disinfect. **(See Appendix E)**
- Classrooms and workspaces will be naturally ventilated by keeping windows open.
- Staff are self-testing for COVID-19 using the Lateral Flow Devices (LFD) twice weekly.

I have heard there may be testing available for my family, how do I start this?

- Twice-weekly lateral flow tests will be given for free to all families and households with primary, secondary school and college aged children and young people, including childcare and support bubbles, to help find more COVID-19 cases and break chains of transmission. Primary aged children are not being asked to test at this time.
- With about a third of individuals with coronavirus showing no symptoms and potentially spreading it without knowing, targeted, regular testing will mean more positive cases within households are found and prevented from entering schools and colleges, helping to keep educational settings safe.
- Rapid testing detects cases quickly – in under 30 minutes – meaning positive cases can isolate immediately. This can be the difference between children being able to stay in school, or a class being sent home due to an outbreak. It could also be the difference between a workplace having to close for a period, or being able to stay open and running.
- [Click here to find more information here about the importance of lateral flow testing.](#)
- [Click here to find out more information about how to get your lateral flow tests](#)

How do I collect my testing kit?

- You can collect 2 packs of home test kits at a local collection point. Each pack contains 7 tests.
- Anyone 18 or over can collect.
- Most collection points are open from 1.30pm to 7pm. You can check online if the location is open or busy before you go. You do not need to make an appointment.
- Do not visit a collection point outside opening hours, as it may be used to test people with coronavirus symptoms outside these times.
- Click here to [find your nearest home test kit collection point](#).

How do I order home test kits online?

- If you cannot get tested at your workplace, or are unable to go to a test site or collect test kits, you can order a home test kit online.
- **Do not order online if you can get a test through other methods.** This frees up home delivery for those who need it most.
- Click here to [order rapid lateral flow home test kits](#)

What if my child is shielded or clinically vulnerable?

- The small number of pupils who will remain on the shielded patient list can return to school, as can those who have family members who are shielding. Some pupils no longer required to shield but who generally remain under the care of a specialist health professional may need to discuss their care with their health professional before returning to school.”

- Where children are not able to attend school because they are following clinical or public health advice, they will have access to remote education.

What if someone in my house is in the 'critically extremely vulnerable' having had a letter about this?

- Pupils who have family members who are critically extremely vulnerable can return to school. Where children are not able to attend school as parents are following clinical advice, absence will not be penalised and they will have access to remote education.

For further detail on vulnerable children and adults we urge to seek further guidance from the materials provided online (see links above) by the government or, even better, by seeking medical advice from your doctor.

APPENDIX A: Drop-off & Collection times

	YEAR GROUP / CLASS TEACHER / CLASS NAME	LSA(s)	Drop Off	Pick Up
Group A	Y1/2 Mrs Chappell (Chipmunks)	Mrs Herridge, Miss Wilson & Ms Martin	8.35am	2.55pm
	Y3/4 Mrs Hannam / Mr Brown (Brown Bears)	Mrs S Stride		
	Y5/6 Mrs Phelps / Mrs Tompkins (Panthers)	Mrs Shahi		
Group B	YR Miss Ramsdale (Reindeers)	Mrs Alexander & Mrs Bryant (Mon)	8.45am	3.05pm
	Y1/2 Miss Knight (Koalas)	Mrs C Stride & Mrs Bryant		
	Y3/4 Mr Warner (Wolves)	Mrs Mukherjee		
	Y5/6 Miss Long (Lions)	Mrs Mason		
Group C	YR Mrs Garrod / Miss Adams (Geckos)	Mrs Cobb	8.55am	3:15pm
	Y1/2 Mrs Johnson / Mrs Baxter (Jaguars)	Mrs Poulter		
	Y3/4 Miss Selman (Snow Leopards)	Mrs Renyard		
	Y5/6 Miss Hamilton (Hyenas)	Mrs Valois		

IMPORTANT NOTES:

Parents **must not arrive on site more than 5 minutes before the allocated times** shown above and must leave the site as soon as practically possible to minimise the possibility of transmission. If you are collecting siblings then you are welcome to wait on the playground (but please remain socially distant).

If you have a 20 minute gap between sibling drop-off and collection times, and this presents a difficulty for you, please speak to the class teacher.

APPENDIX B: Internal School Plan and Class Placement

This diagram indicates where each of our classes will be based on our full return on the 8th March.

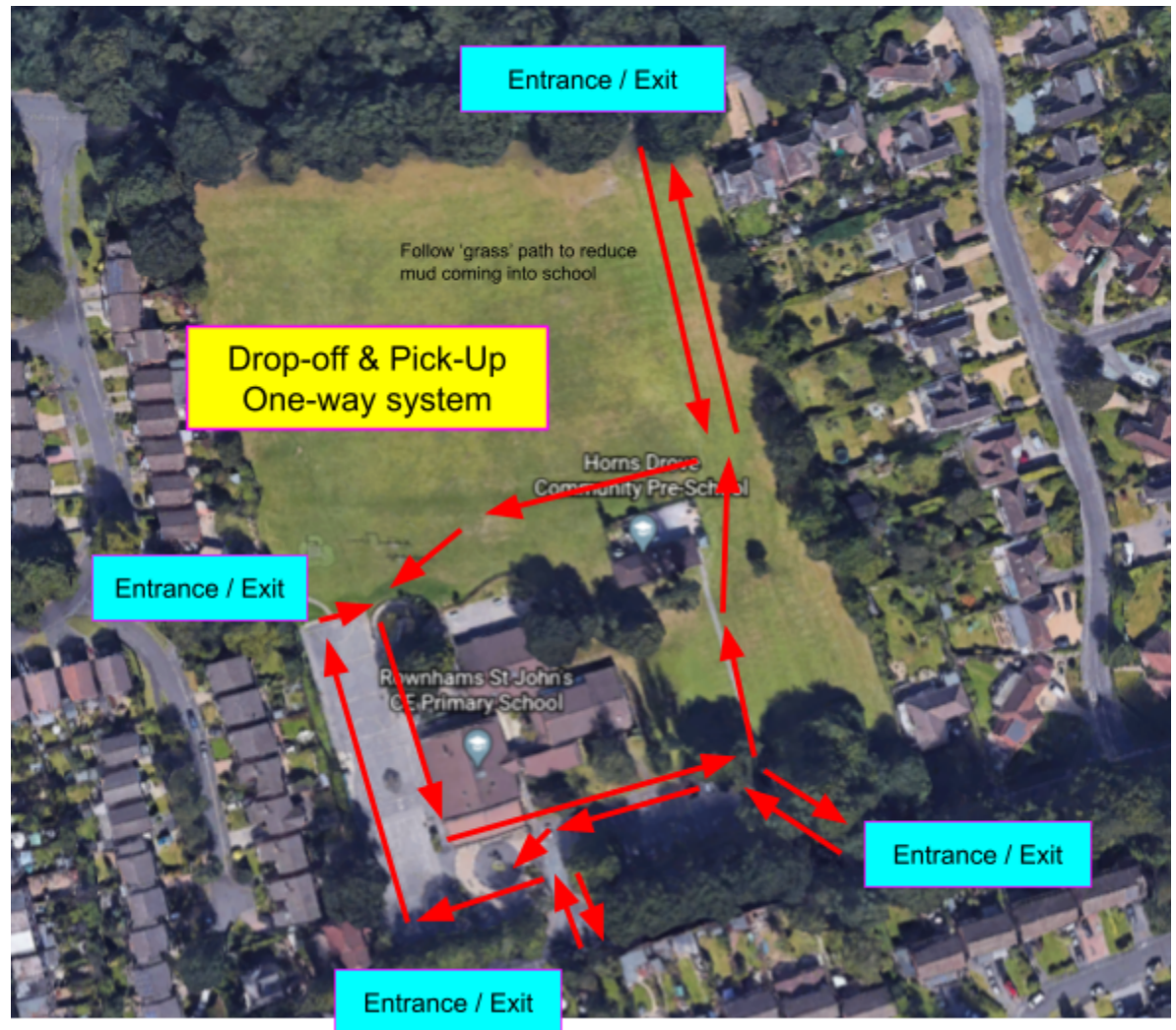
We will have 4 staffrooms - although not shown on this plan - to try and keep our staff within their 'bubbles' as much as possible.



APPENDIX C: Parent and Carers one-way system for moving on and off site at drop-off and Collection





For our March reopening, we have simplified our one-way system and all gates will operate as entrances and exits.

Please social distance by at least 2m at all times and remember to wear a face covering when on the pavements outside the school site and on the school grounds to protect yourself **and our children, families and staff that are around you.**



APPENDIX D: Drop-off and Collection times Zone

Teachers will greet and drop-off children at the locations described below. The teacher will then lead them to the appropriate entrance for their classroom.

-  Year R (inside their play area)
-  Year 1/2
-  Year 3/4
-  Year 5/6

Please remember, parents and carers must not arrive on site (or wait at the gate) more than 5 minutes before the allocated pick up and drop off time.

Please do not cause unnecessary congestion or 'bottle-necking' that will increase the risk of transmission.



APPENDIX E: Checklist for Parents & Carers

IMPORTANT FOR SAFETY: All items brought into school must be clearly labelled with the child's name.

- ☐ Check your child's teacher
- ☐ Check your child's drop-off and collection times and routines.
- ☐ Familiarise your family with the school entrance, exit and one-way system around the school site.
- ☐ Water bottle (this can come home each day for cleaning)
- ☐ Children to wear normal school uniform
- ☐ Come into school in PE kit on your designated PE day (except Year R)
- ☐ Small school bags are allowed
- ☐ Lunch boxes should be plastic, where possible (fabric lunch boxes are difficult to sanitise)
- ☐ All adults to wear a face covering when on the pavements around the school and on the school grounds
- ☐ Abide by social distancing guidelines to protect our families and staff, at all times
- ☐ Remind your child about how to maintain social distancing